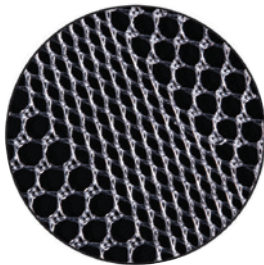


**DynaMesh®-LICHTENSTEIN** and **DynaMesh®-LICHTENSTEIN visible** implants are intended for the surgical treatment of inguinal hernias and permanently bridge and reinforce the soft tissue in the groin region in the area of the hernia defect.

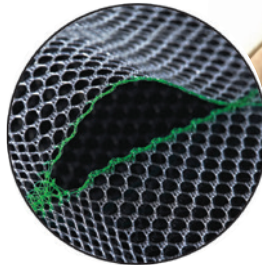
## DynaMesh®-LICHTENSTEIN

For Example: inguinal hernia, left side



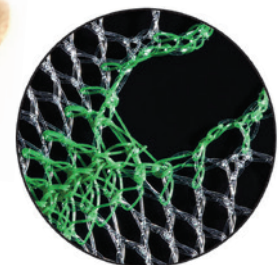
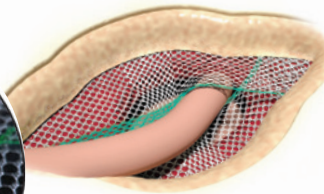
### Varying Pore Size

The devices have areas with different pore sizes.



### Prefabricated Slit & Smooth Warp-Knitted Selvages

The devices have a prefabricated slit with smooth warp-knitted selvages, and they have tear propagation resistance [TR82].



### Visibility & Handling

The colouring provides better intraoperative visibility and handling of the device.

## Use and Properties

Product	DynaMesh®-LICHTENSTEIN (1)	DynaMesh®-LICHTENSTEIN visible (2)
Surgical Treatment	Inguinal Hernias	
Surgical Approach	Open	
Surgical Technique	Lichtenstein	
Mesh Position	Onlay (Anterior)	
Fixation	Sutures / Tacks / Tissue Adhesives*	
Coloured Filaments	Green	Black
Smooth Warp-Knitted Selvedges		●
Visible Technology	●	●
Materials	- Polyvinylidene fluoride (PVDF) (CAS 24937-79-9) > 99% (w/w) (1) (2) - Phthalocyanine green (CAS 1328-53-6) < 1% (w/w) (1) - Triiron tetraoxide (CAS 1317-61-9) < 1% (w/w) (2)	
Polymer (Monofilament)	PVDF	
Biocompatibility	● [TR1]	
Ageing Resistance	● [2A, 5 <sup>VIT</sup> , 27A, 52 <sup>VIT</sup> , 93A, 101]	
Tear Propagation Resistance	● [TR82]	
Effective Porosity	● High effective porosity reduces inflammation and the risk of excessive scar formation. [103 <sup>P</sup> , TR83]	
Klinge's Mesh Classification	Class 1a [102 <sup>P</sup> , TR83]	

\* Tissue adhesive can be used for fixation for direct or indirect inguinal hernias with a defect size of 1.5 cm to 3 cm (European Hernia Society Classification: M2 or L2).

## Product Range

When selecting the mesh size, ensure sufficient overlap!

DynaMesh®-LICHTENSTEIN	06 cm x 11 cm	PV110611F1/F3/F5/F10
	7.5 cm x 15 cm	PV110715F1/F3/F5/F10
	10 cm x 15 cm	PV111015F1/F3/F5

DynaMesh®-LICHTENSTEIN visible	06 cm x 11 cm	PV170611F3/F10
	7.5 cm x 15 cm	PV170715F1/F3/F10

FX = X unit(s)/box (e.g. F3 = 3 unit(s)/box)

Can be used both for the right and the left side.

- Applies to all product sizes
- Does not apply
- [#] Reference "#" (see "References")
- [TR#] Internal test report (see "internal test report references")
- Limitations "A" animal trial, "B" bench test, "VIT" in-vitro trial, "P" published results based on the analysis of human mesh explants, "PB" published results mainly based on bench tests



More information: <https://en.dyna-mesh.com/dynamesh-lichtenstein-gb>

Distributed by:

