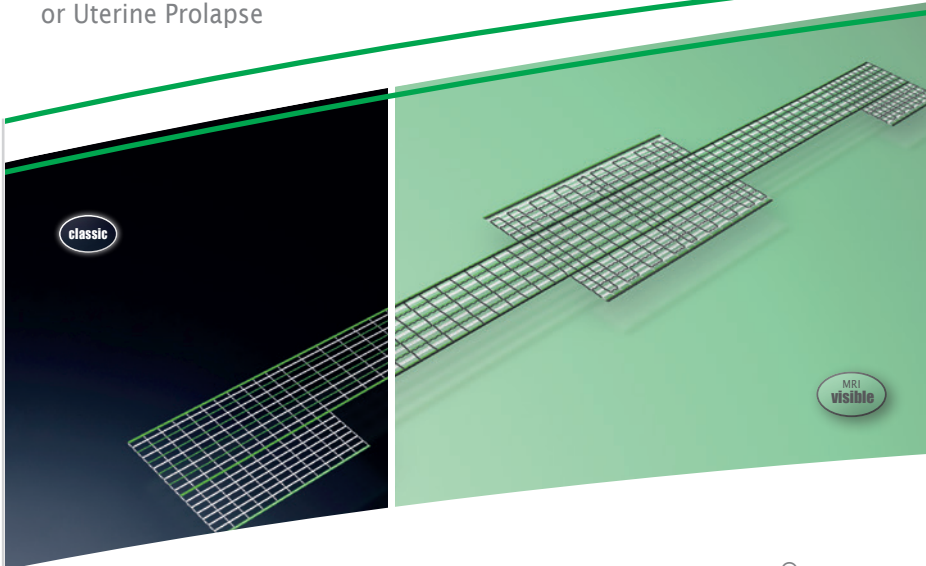
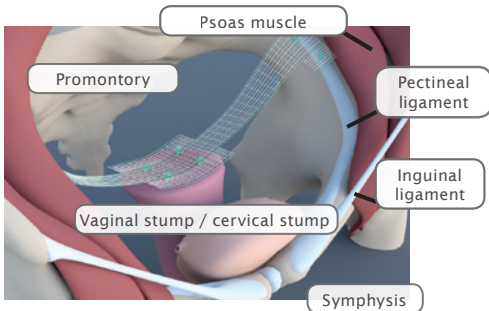


Female Pelvic Organ Prolapse  
Vaginal/Cervical Stump  
or Uterine Prolapse



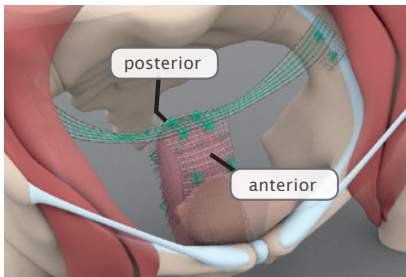
**DynaMesh®-PRP soft** and **DynaMesh®-PRP visible** implants are intended to be used as bridging material and reinforce soft tissue as part of surgical treatment for apical pelvic organ prolapse.

**DynaMesh®-PRP**



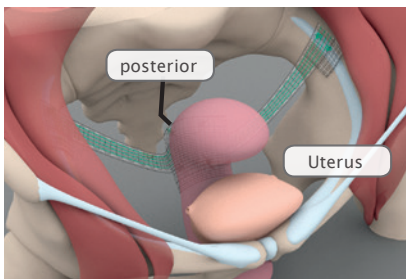
Pectopexy after vaginal/cervical stump prolapse:

- Two implant sizes are available in the following dimensions **DynaMesh®-PRP soft / visible 03 cm x 15 cm** and **DynaMesh®-PRP visible 03 cm x 18 cm**.
- With greatly shortened vaginas, e.g., following a radical hysterectomy, **DynaMesh®-PRP visible 03 cm x 18 cm** can be used.



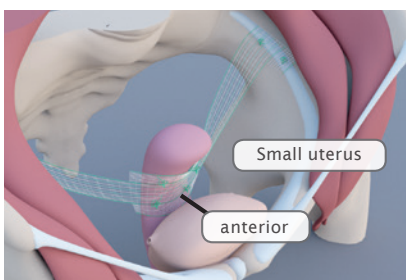
Pectopexy after vaginal/cervical stump prolapse with concomitant cystocele and/or rectocele:

- Additional stabilisation of the anterior and/or posterior vaginal wall can be achieved with **DynaMesh®-PRP visible 17 cm x 15 cm**.



Pectopexy after uterine prolapse with uterine preservation:

- With a normal sized uterus, **DynaMesh®-PRP visible 03 cm x 18 cm** can be used and fixed in place on the posterior cervix.




Pectopexy after uterine prolapse with uterine preservation:

- With smaller uteri (below 100 g), anterior fixation of **DynaMesh®-PRP soft / visible 03 cm x 15 cm** can be selected as an alternative.

## Use and Properties

Product	DynaMesh®-PRP soft <sup>(1)</sup> / visible <sup>(2)</sup> 03 cm x 15 cm	DynaMesh®-PRP visible 03 cm x 18 cm <sup>(3)</sup>	DynaMesh®-PRP visible 17 cm x 15 cm <sup>(4)</sup>
Surgical Treatment	Apical Pelvic Organ Prolapse (Uterus / Vaginal Stump / Cervical Stump)		
Surgical Approach	Minimally Invasive / Open		
Surgical Technique	Pectopexy		Pectopexy with reinforcement of the vaginal walls in case of concomitant cystocele and/or rectocele.
Fixation	- Pectineal ligament: non-absorbable suture - Vaginal stump: absorbable monofilament suture - Cervix: non-absorbable suture (size 0)		
Smooth Warp-Knitted Selvedges	●		
Defined Elasticity	● [TR120]		
Visible Technology	● <sup>(1)</sup> ● <sup>(2) - (4)</sup>		
Materials	- Polyvinylidene fluoride (PVDF) (CAS 24937-79-9) > 99% (w/w) <sup>(1) - (4)</sup> - Phthalocyanine green (CAS 1328-53-6) < 1% (w/w) <sup>(1) - (4)</sup> - Triiron tetraoxide (CAS 1317-61-9) < 1% (w/w) <sup>(2) - (4)</sup>		
Polymer (Monofilament)	PVDF		
Biocompatibility	● [TR1]		
Ageing Resistance	● [2 <sup>A</sup> , 5 <sup>VIT</sup> , 27 <sup>A</sup> , 52 <sup>VIT</sup> , 93 <sup>A</sup> , 101]		
Effective Porosity	● High effective porosity reduces inflammation and the risk of excessive scar formation. [103 <sup>P</sup> , TR121]		
Klinge's Mesh Classification	Class 1a [102 <sup>P</sup> , TR121]		

● Applies to all product sizes  
● Does not apply  
[#] Reference "#" (see "References")  
[TR#] Internal test report (see "internal test report references")  
Limitations "A" animal trial, "B" bench test, "VIT" in-vitro trial, "P" published results based on the analysis of human mesh explants, "PB" published results mainly based on bench tests



More information: <https://en.dyna-mesh.com/dynamesh-prp-gb>

Distributed by:



**LAWMED**  
ADVANCING SURGICAL POSSIBILITIES TOGETHER

## Pectopexy

Bilateral Fixation on the Pectineal Ligament

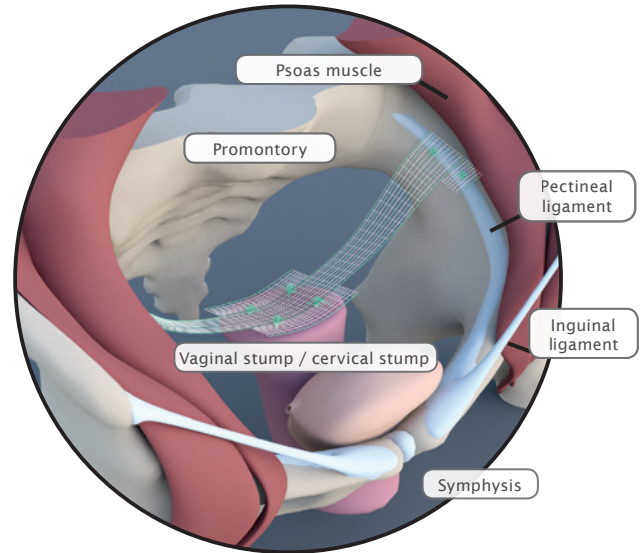


Fig.: Apical mesh repair following hysterectomy with DynaMesh®-PRP soft / visible (03 cm x 15 cm)

## Product Range

<b>DynaMesh®-PRP soft</b>	<sup>(1)</sup> 03 cm x 15 cm	PV540315F1/F3
<b>DynaMesh®-PRP visible</b>	<sup>(2)</sup> 03 cm x 15 cm	PV780315F1
<b>DynaMesh®-PRP visible</b>	<sup>(3)</sup> 03 cm x 18 cm	PV780318F1/F3
<b>DynaMesh®-PRP visible</b>	<sup>(4)</sup> 17 cm x 15 cm	PV781715F1/F3

FX = X unit(s)/box (e.g. F3 = 3 unit(s)/box)

DynaMesh®-PRP - Animation: Pectopexy <a href="https://de.dyna-mesh.com/Vi042xx">https://de.dyna-mesh.com/Vi042xx</a>	
DynaMesh®-PRP - Animation: Hysteropectopexy - Anterior Fixation <a href="https://de.dyna-mesh.com/Vi061xx">https://de.dyna-mesh.com/Vi061xx</a>	
DynaMesh®-PRP - Animation: Hysteropectopexy - Posterior Fixation <a href="https://de.dyna-mesh.com/Vi053xx">https://de.dyna-mesh.com/Vi053xx</a>	
DynaMesh®-PRP - Animation: Pectopexy with Anterior & Posterior Mesh Repair <a href="https://de.dyna-mesh.com/Vi054xx">https://de.dyna-mesh.com/Vi054xx</a>	
DynaMesh® MRI - Animation: MRI Reconstruction with DynaMesh®-PRP visible <a href="https://de.dyna-mesh.com/Vi069xx">https://de.dyna-mesh.com/Vi069xx</a>	

Distributed by: