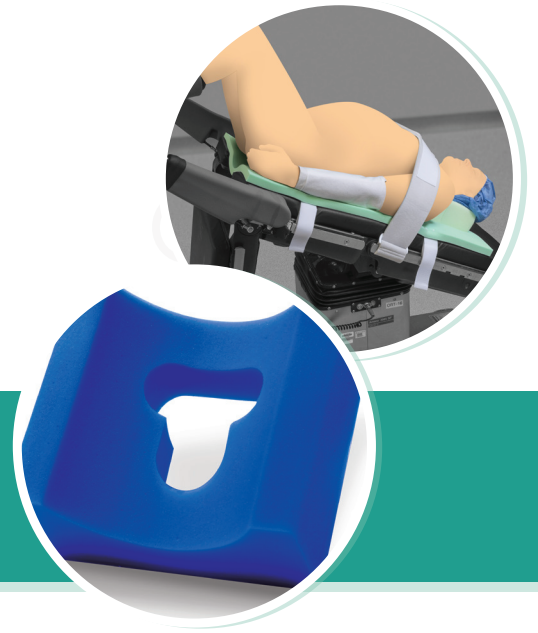


PATIENT POSITIONING SOLUTIONS

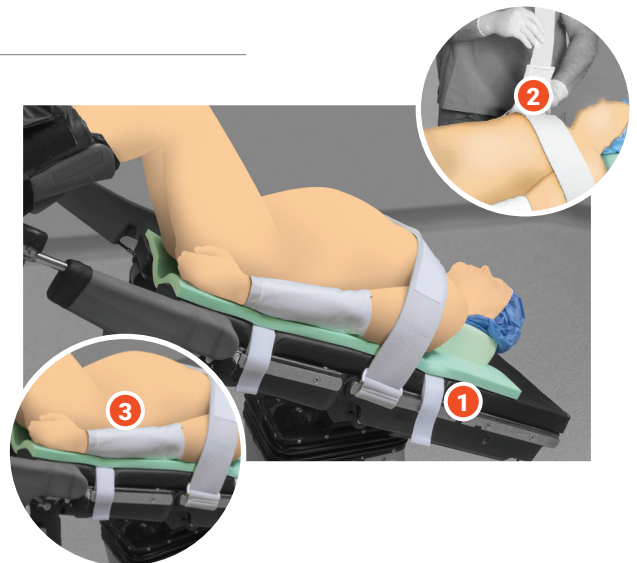
Our positioners play an important role in maintaining tissue viability while providing patient support.



PrimaPad™

TRENDELENBURG POSITIONING SYSTEM

- 1 High Coefficient of Friction**
 Our special memory foam limits movement of the patient when placed in the Trendelenburg position.
- 1 High Density Viscoelastic Foam**
 The high density nature of the viscoelastic foam helps reduce tissue damage, skin abrasions, and pressure ulcers. The natural properties of the foam retain body heat, thus helping to maintain normothermia.
- 2 Included Body Straps**
 A set of hook-and-loop body straps is included that easily attach to the accessory rail, helping to further secure the patient, especially when tilted.
- 3 Strong Non-Woven Lift Sheet**
 The included non-woven lift sheet can be used for traditional patient transfer, then utilized to wrap and secure the patient arms.



*Does not contain natural rubber latex, nano-silver additives or phthalates
 Safe for patients and staff with possible allergies and prevention of leaching of potentially harmful compounds.*

PrimaPad™ Trendelenburg Positioning Kits

Memory foam pad, lift sheet, set of body sheets. Head cradles and arm protectors are also available as kit components

CODE	DESCRIPTION	PKG
50-582	PrimaPad™ Trendelenburg Positioning Kit, Universal, Non-Sterile	6 kits/cs
50-580	PrimaPad™ Trendelenburg Positioning Kit, Large, Non-Sterile	6 kits/cs
50-583	PrimaPad™ Trendelenburg Positioning Kit, X-Large, Non-Sterile	6 kits/cs
50-595	PrimaPad™ XL Trendelenburg Positioning Kit w/ PrimaPad™ Arm Protectors, Non-Sterile	3 kits/cs



PrimaPad™ Trendelenburg Positioning Kits (cont)

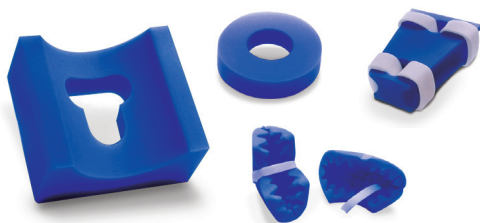
CODE	DESCRIPTION	PKG
50-596	PrimaPad™ XL Trendelenburg Positioning Kit w/ Universal Arm Protectors, Non-Sterile	3 kits/cs
50-500	Prima Paddies, 5" x 10" 14 units, 5" x 20" 7 units, Non-Sterile	21 ea/cs
50-433	PrimaPad™ Trendelenburg Arm Protectors, Standard, Pair, Non-Sterile	4 kits/cs
50-435	Universal Arm Protectors, Non-Sterile	12 ea/cs

PrimaPad™ Trendelenburg components à la carte

CODE	DESCRIPTION	SIZE	PKG
50-602	Trendelenburg Positioning Pad	20 x 35 x 1 in (51 x 89 x 2.5 cm)	6 ea/cs

CODE	DESCRIPTION	SIZE	PKG
50-KB1023	Body Straps	4 x 61 in (10 x 155 cm)	50 pr/cs

CODE	DESCRIPTION	SIZE	PKG
50-LFT008	Lift Sheet	12 x 80 in (30 x 205 cm)	50 ea/cs



PATIENT POSITIONERS

Offering ideal support, Alleset's disposable Foam Patient Positioners are constructed of high density polyurethane foam, designed for comfort and safety. Our systems can provide modular solutions for a variety of uses.

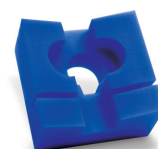
CODE	SIZE	DESCRIPTION	PKG
50-150101	9 x 8 x 4in (23 x 20 x 10cm)	Head Cradle, Adult	36
50-150109	7 x 6.25 x 3.5in (18 x 16 x 8cm)	Head Cradle, Pediatric	36



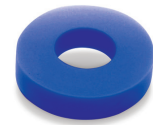
CODE	SIZE	DESCRIPTION	PKG
50-150102	9 x 8 x 4in (23 x 20 x 10cm)	Head Cradle with Trach Slit, Adult	36



CODE	SIZE	DESCRIPTION	PKG
50-150104	9 x 8 x 4in (23 x 20 x 10cm)	Head Cradle, Stacked with Trach Slit, Adult	36



CODE	SIZE	DESCRIPTION	PKG
50-150105	9in (23cm)	Head Rest, Donut	36



CODE	SIZE	DESCRIPTION	PKG
50-150106	Multiple Sizes	Head Rest, Donut, Multiple	36



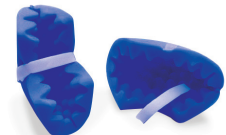
CODE	SIZE	DESCRIPTION	PKG
50-150201	15.5 x 6.5in (39 x 16.5cm)	Ulnar Nerve Protectors	36 pair



CODE	SIZE	DESCRIPTION	PKG
50-150201	14 x 7in (35.5 x 18cm)	Foot/Heel Protector	36 pair



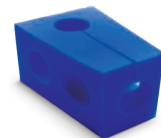
CODE	SIZE	DESCRIPTION	PKG
50-150205	19 x 9.25in (48 x 23.5cm)	Heel and Elbow Protector	36 pair



CODE	SIZE	DESCRIPTION	PKG
50-150203	24 x 5 x 3in (61 x 13 x 7.5cm)	Laminectomy Arm Cradle	12 pair



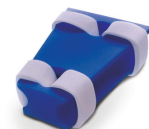
CODE	SIZE	DESCRIPTION	PKG
50-150202	12.5 x 15.5 x 9in (32 x 39 x 23cm)	Arm Cradle	10



CODE	SIZE	DESCRIPTION	PKG
50-150501	8 x 10in (20 x 25.5cm)	Foot Drop Support	12



CODE	SIZE	DESCRIPTION	PKG
50-150302	16.5 x 6 x 21in (42 x 15 x 53cm)	Hip Abduction Pillow	6



CODE	SIZE	DESCRIPTION	PKG
50-150401	24 x 11 x 8in (61 x 28 x 20cm)	Body Wedge	6

