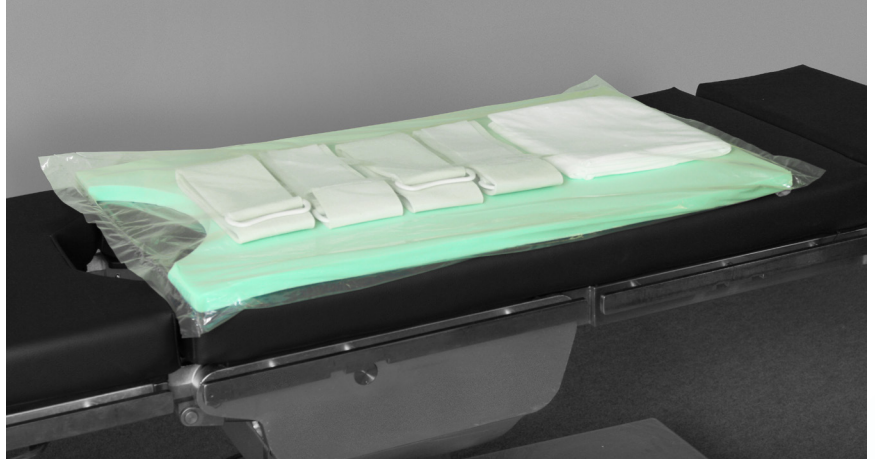


INTENDED USE

The Trendelenburg Positioning System is used to help prevent sliding of patients on the surgical table placed in the Trendelenburg position while assisting in protection from nerve damage and pressure ulcers.



INSTRUCTIONS FOR USE

1. **Prepare the surgical table** – Ensure that the surgical table is level and that the surgical table pads are securely attached to the table. Make sure that the top surface of the surgical table is clean and dry, and the surgical table is not covered by any other items such as transfer boards, lift sheets, linen, and so forth.
2. **Remove the kit from the packaging** – Remove the pad and all of the kit components from the plastic packaging. Discard the plastic packaging.
3. **Position the pad on the surgical table** – Place the bottom surface of the pad directly on the surgical table. Align the pad with the bottom edge of the middle section of the surgical table. If the middle section of the surgical table has a perineal cut-out, the end of the pad with the perineal cut-out should be positioned over the perineal cut-out of the surgical table (refer to Figure 1).
4. **Place the lift sheet on the pad** – Unfold the lift sheet and lay it across the width of the pad where the patient's lumbar curve will be located. Center the lift sheet so that each end is approximately the same distance from the floor (refer to Figure 2).
5. **Position the patient on the pad** – Place the patient onto the pad in a position that will allow tucking of the arms next to the patient's body. Make sure that the shoulders do not extend past the edge of the pad and that the skin at the scapula and sacrum are in direct contact with the surface of the pad (refer to Figure 3).



Figure 1: Aligning pad on table



Figure 2: Placing lift sheet across pad

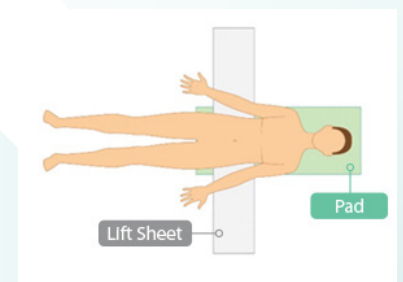


Figure 3: Patient position

6. **Secure the patient's arms with the lift sheet** – Wrap the lift sheet around the patient's arm. Tuck the end of the lift sheet under the patient (refer to Figure 4). Do not tuck the arms too tightly. Be sure to check the position of the patient's fingers around the surgical table mechanisms and for proper circulation.



Figure 4: Securing patient's arms with lift sheet

7. **Secure the patient with the body strap**

a. Locate the body strap with the small square of hook-and-loop material. Hold the body strap with the small square of hook-and-loop material facing out and pass the buckle between the surgical table and the side rail. Insert the end of the strap through the buckle and pull the entire length of the body strap through, making sure not to twist the body strap (refer to Figure 5). Place the body strap across the patient's chest. The small square of hook-and-loop material should be facing up.

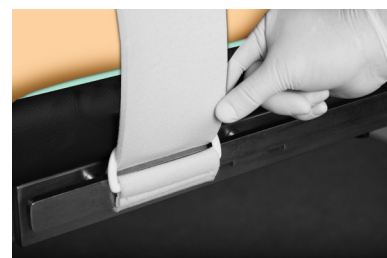


Figure 5: Attaching body strap to accessory rail

b. Move to the opposite side of the surgical table. Locate the body strap with the large rectangle of hook-and-loop material. Repeat the above step, holding the body strap with the large rectangle of hook-and-loop material facing the patient.

c. Affix the two (2) body straps to each other so that they are secure across the patient's chest (refer to Figure 6). Do not overtighten.



Figure 6: Attaching the body straps across the patient's chest

MAINTENANCE

Inspect the pad and straps. Do not use products with damage or deterioration.

SHELF LIFE

The shelf life of the product is three (3) years if stored under the specified conditions.

STORAGE AND TRANSPORT

The packaged products shall be stored in a cool and dry location. Keep away from direct sunlight, corrosive substances and in a well-ventilated indoor location.

The pads should always be stored and handled flat. Do not store the pads rolled or folded.

Distributed by:
Lawmed Ltd
Building 5 The Heights
Wellington Way
KT13 0NY
UK

EC REP

European Representative:
GRI-Alleaset Limited BV
Kingsfordweg 151
1043 GR Amsterdam THE
NETHERLANDS
www.gri-alleaset.com



Manufactured by:
GRI Medical & Electronic Technology Co.,
Ltd. 1805 Honggao Road
314031 Jiaxing, Zhejiang
PEOPLE'S REPUBLIC OF CHINA
www.gri-usa.com

